

# BCMA Series

## Common Mode Filters For Automotive Signal Line

### Size 4532

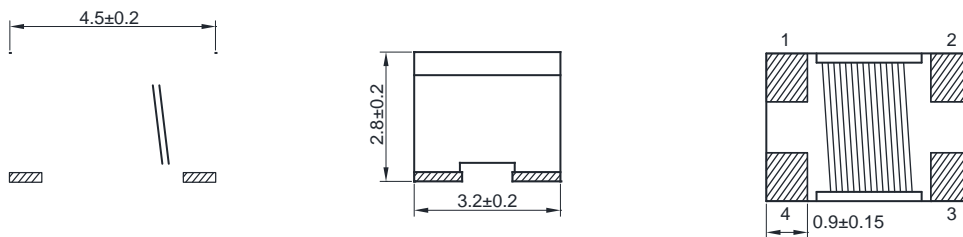
#### FEATURES

Impedance variation: Extensive lineup are available for compatibility with various usages  
 Common mode filters for Signal Line  
 Operating temperature range: -40 to +125  
 AEC-Q200 qualified  
 Quantity: 500pcs

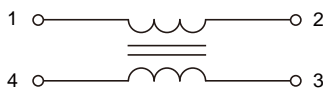
#### APPLICATION

Radiated noise suppression for car multimedia interfaces (MOST, USB2.0, IDB-1394, etc.)

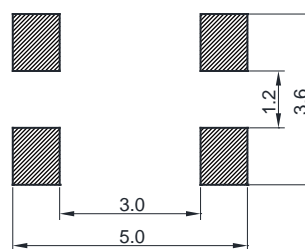
#### Dimensions: [mm]



#### Schematic:



#### Land Pattern: [mm]

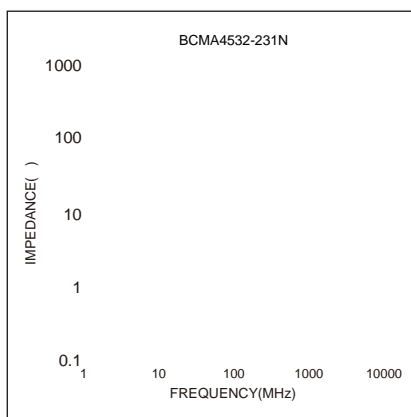
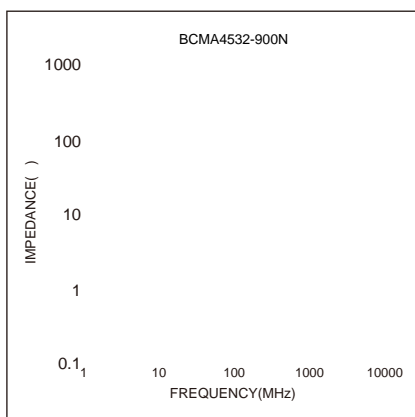


#### Electrical Properties:

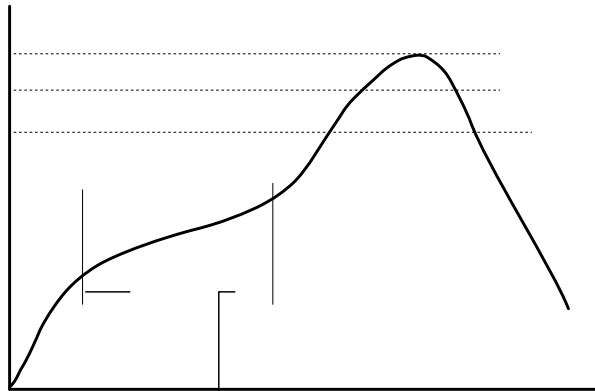
Part No	Z @ 100 MHz Min.	Z @ 100 MHz Typ.	I <sub>R</sub> Max.	R <sub>DC</sub> Max.	V <sub>DC</sub> Max. (V)	IR Min.
BCMA4532-900N	68	90	4000	0.050	50	10M
BCMA4532-231N	173	230	3500	0.050	50	10M
BCMA4532-601N	450	600	2500	0.060	50	10M
BCMA4532-901N	650	900	2300	0.070	50	10M
BCMA4532-142N	1000	1400	2000	0.100	50	10M
BCMA4532-282N	2100	2800	900	0.350	50	10M

Temperature Rise Current: The actual value of DC current when the temperature rise is T=40°C

## Typical Electrical Characteristics:



## Soldering Reflow:



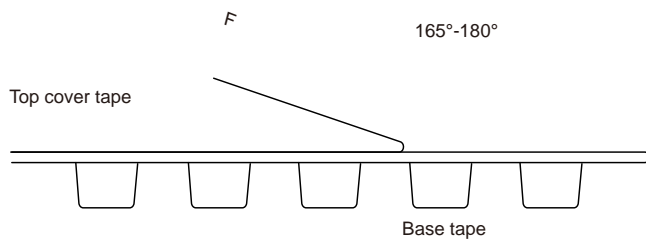
Preheat condition: 150 ~200 / 60~180 sec.  
 Allowed time above 217 : 60~150 sec.  
 Max temperature: 260 .  
 Max time at max temperature: 10 sec.  
 Allowed Reflow time: 3x max.

## Packaging Information:

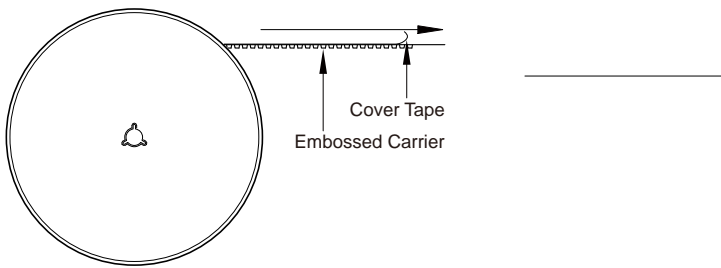
Tape Dimension :

Series	A0 (mm)	B0 (mm)	D (mm)	P0 (mm)	P1 (mm)	W (mm)	K0 (mm)	E (mm)	T (mm)
45? 3& %\$	%&f " ž#	&ž+f " ž#	#ž f " ž#	&ž' f " ž#	*ž' f " ž#	#\$ž' f " ž%	%&f " ž#	#ž)' f " ž#	" ž\$(f " ž'

Peel force of top cover tape:



Reel Dimension : [mm]



## Cautions and Warnings:

### Storage Conditions :

- The storage period is within 12 months after the completion of production. Be sure to follow the storage conditions (tefa8c4 0e to follow the storage condi -

- 

- 

- 

### Operation Instructions:

- 

- 

- 

-